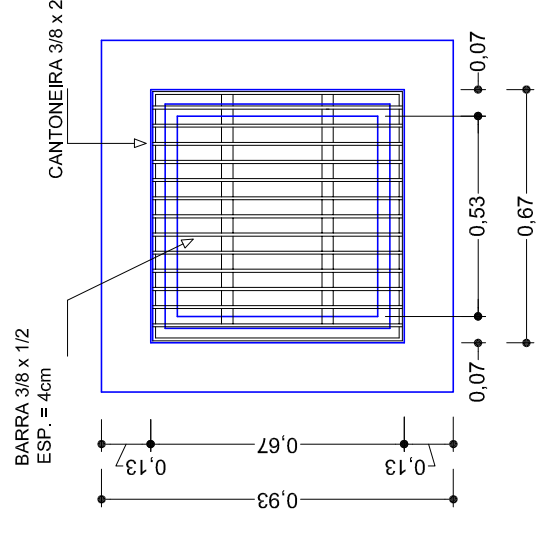
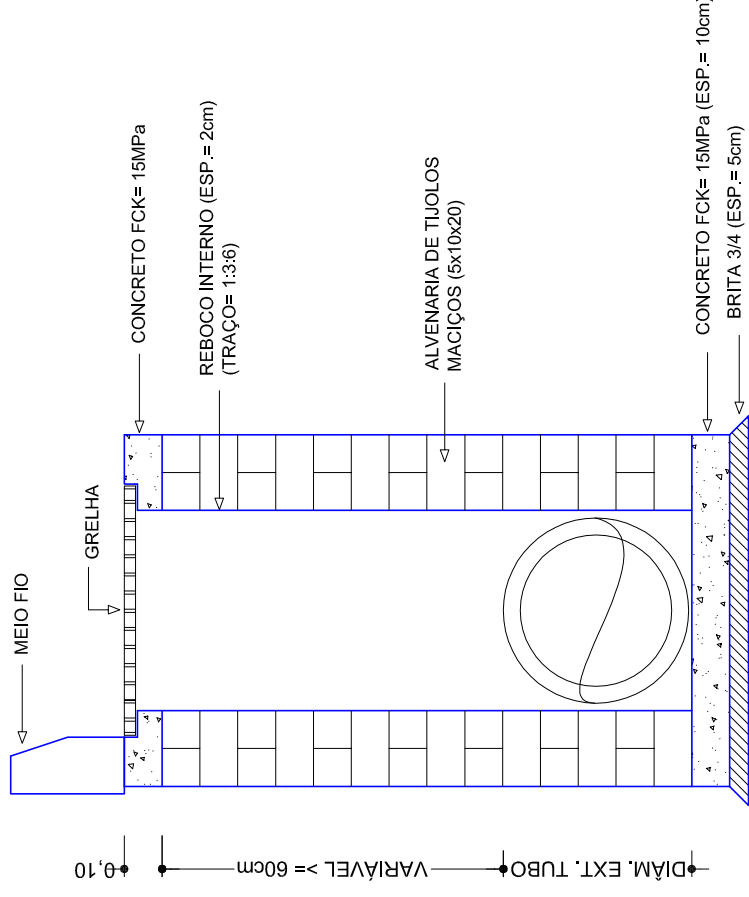
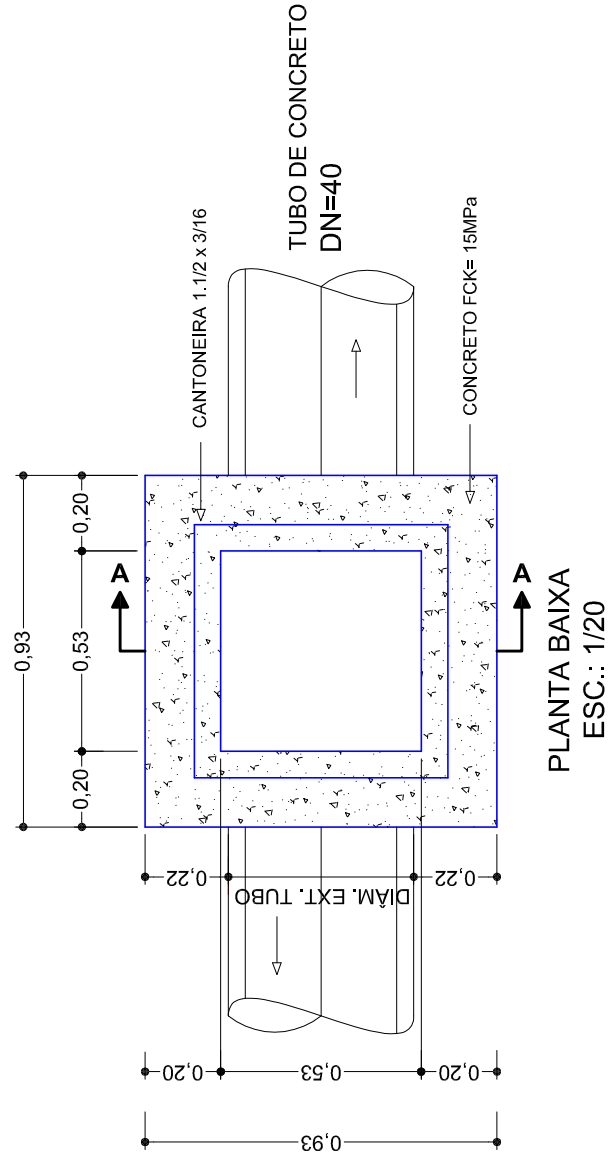
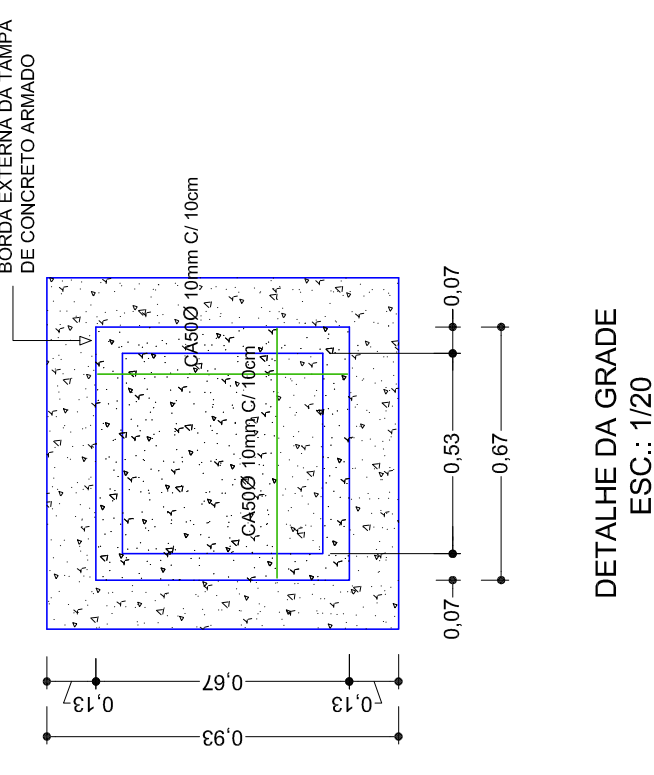
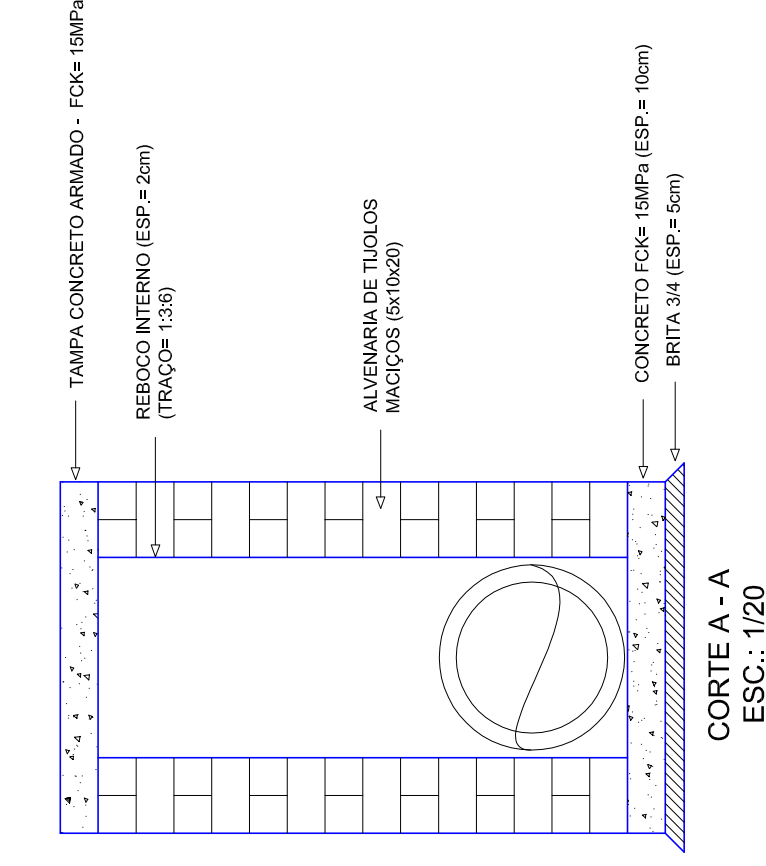
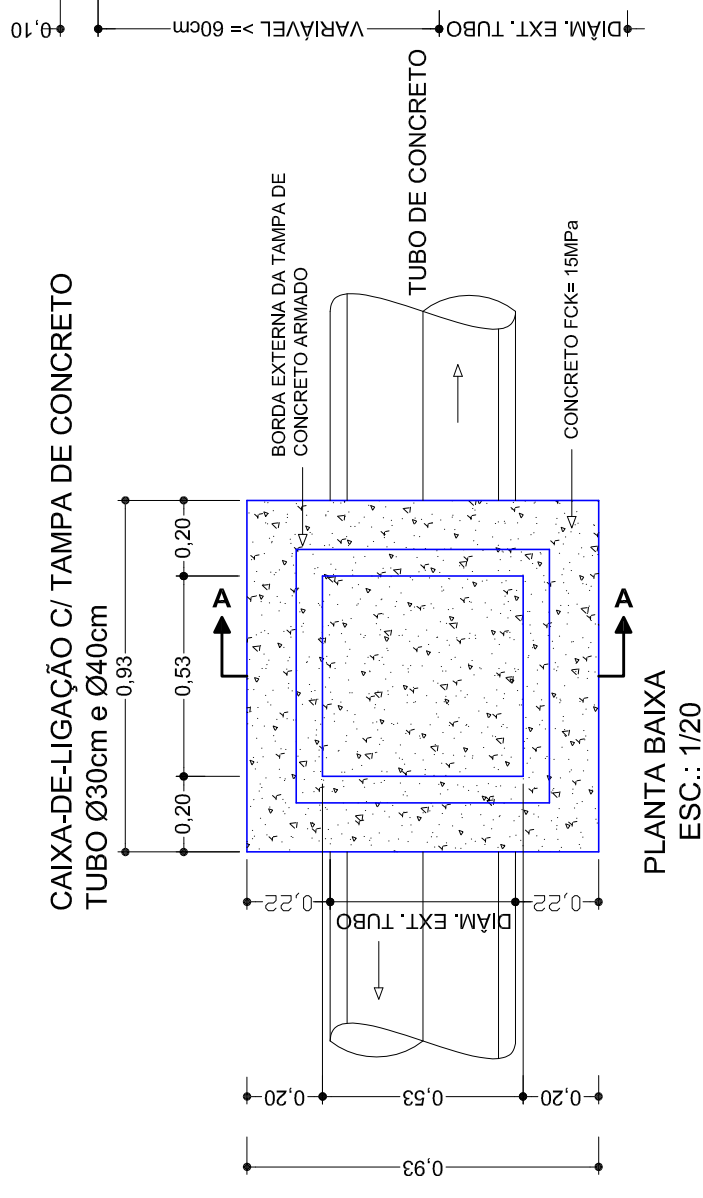


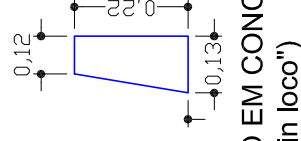
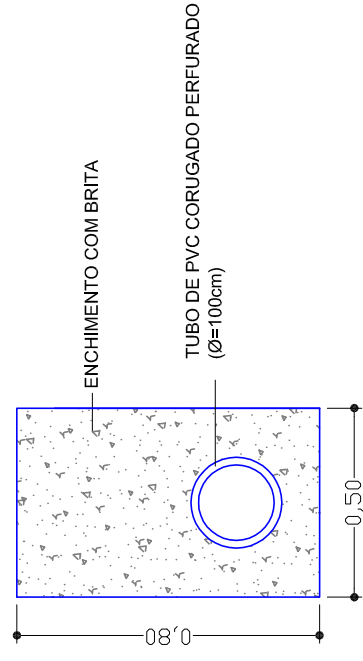
CAIXA COLETORA C/ BOCA-DE-LOBO
TUBO Ø30cm e Ø40cm



CAIXA-DE-LIGAÇÃO C/ TAMPA DE CONCRETO
TUBO Ø30cm e Ø40cm



DRENO TIPO 0,50m X 0,80m



ELABORAÇÃO:
L+B ENGENHARIA RODOVILIÁRIA
CREA/RS: 236690



CONTRATANTE:
MUNICÍPIO DE MARAVILHA/SC



TÍTULO: PROJETO BÁSICO DE PAVIMENTAÇÃO ASFÁLTICA

Referência: RUA INDEPENDÊNCIA - ENTRE A RUA EUCLIDES MARIO CANALLE E A RUA ALEMANHA

Conteúdo: DETALHES DE DRENAGEM

Responsável técnico: CREA/RS: 101614

ESCALA: ABRIL/2020

FRANCHA: INDICADA

MUNICÍPIO DE MARAVILHA/SC

ENG. DR. AÍSIAN VIEIRA BUHLER

INDEPENDÊNCIA 06/07