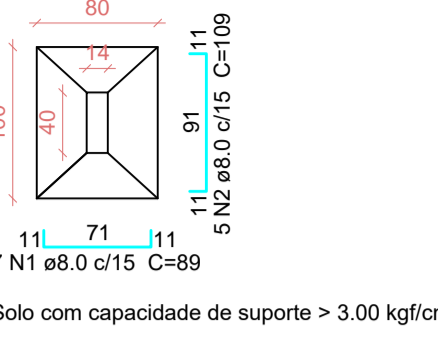
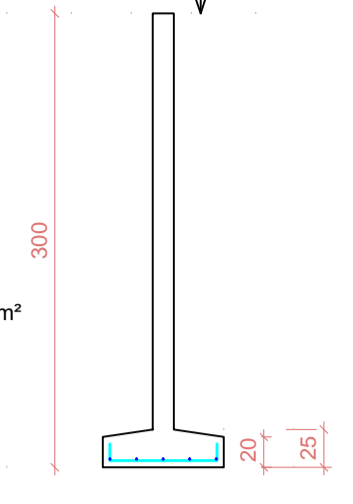


SX6
PLANTA
ESC 1:50

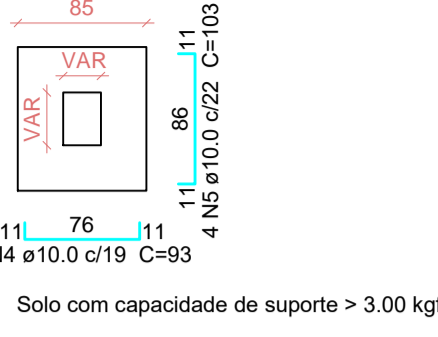


Solo com capacidade de suporte > 3.00 kgf/cm²

CORTE
ESC 1:50

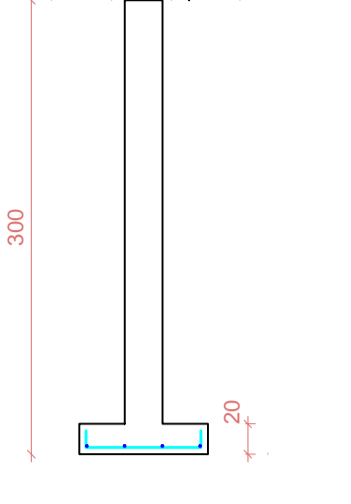


S11=S12=S14=S15=SX1=SX2=SX3=SX4=SX5
PLANTA
ESC 1:50

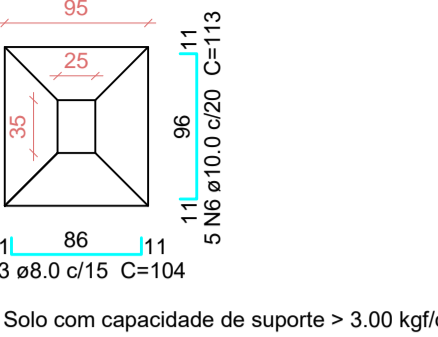


Solo com capacidade de suporte > 3.00 kgf/cm²

CORTE
ESC 1:50

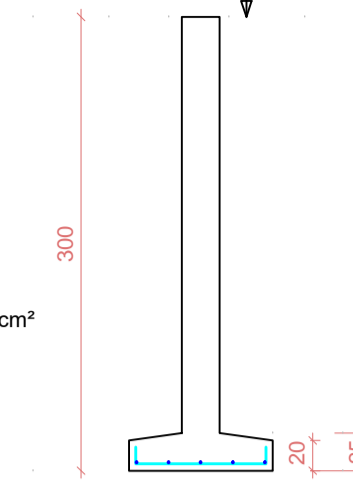


S22=S24=S25=S26=S27
PLANTA
ESC 1:50

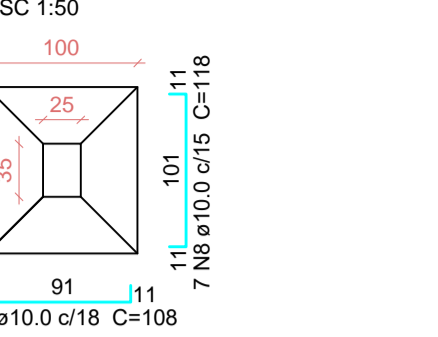


Solo com capacidade de suporte > 3.00 kgf/cm²

CORTE
ESC 1:50

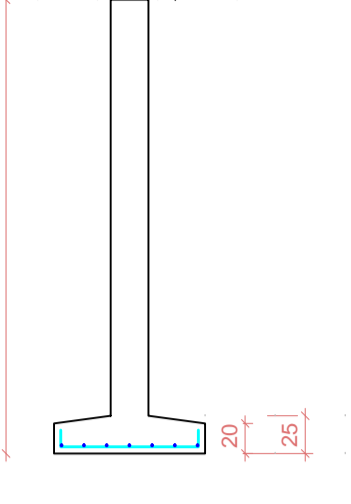


S1=S2=S3=S7=S8=S9=S13=S16=S17=S18=S19
=S20=S21=S23
PLANTA
ESC 1:50

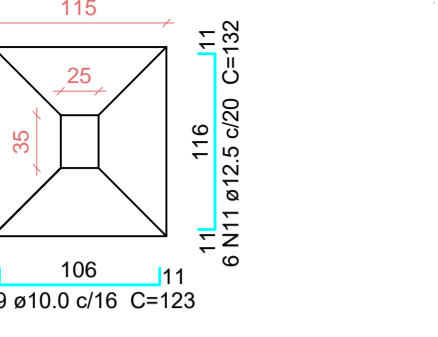


Solo com capacidade de suporte > 3.00 kgf/cm²

CORTE
ESC 1:50

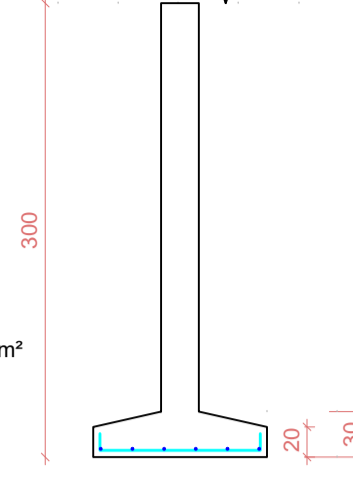


S4=S6=S10
PLANTA
ESC 1:50

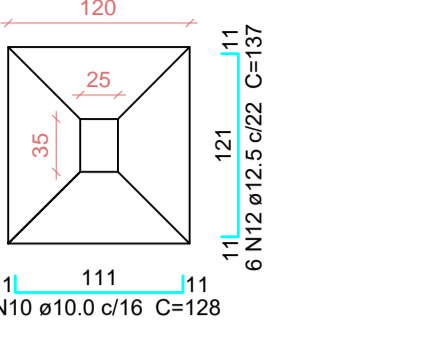


Solo com capacidade de suporte > 3.00 kgf/cm²

CORTE
ESC 1:50

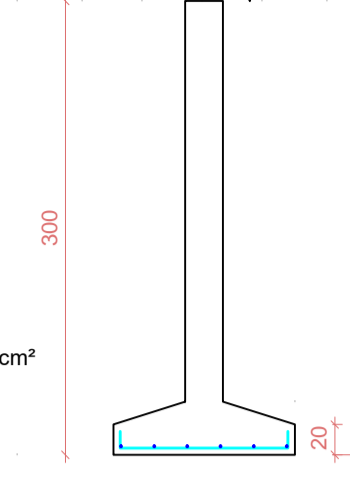


S5
PLANTA
ESC 1:50



Solo com capacidade de suporte > 3.00 kgf/cm²

CORTE
ESC 1:50



Relação do aço

CA50	N	DIAM (mm)	QUANT (Barras)	UNIT (cm)	C.TOTAL (cm)
	1	8.0	7	89	623
	2	8.0	5	109	545
	3	8.0	35	104	3640
	4	10.0	45	93	4185
	5	10.0	36	103	3708
	6	10.0	25	113	2825
	7	10.0	84	108	9072
	8	10.0	98	118	11564
	9	10.0	24	123	2952
	10	10.0	8	128	1024
	11	12.5	18	132	2376
	12	12.5	6	137	822

Resumo do aço

CA50	DIAM (mm)	C.TOTAL (m)	PESO + 10% (kg)
	8.0	48.1	20.9
	10.0	353.3	239.6
	12.5	32	33.9
PESO TOTAL (kg)			294.4

Volume de concreto (C-25) = 7.64 m³
Área de forma = 26.84 m²



Planta de locação
escala 1:50



ENGENHARIA E CONSTRUÇÕES LTDA.
CREA SC nº 22187-7 Fone (49) 3664-0417 Av. Sul Brasil, 329 - Maravilha-SC

OBRA: Edificação Comercial
ENDEREÇO: Avenida Maravilha, esquina com a Rua Carlos Antonio Cembranel - Maravilha/SC

REFERÊNCIA: SAPATAS E LOCAÇÃO

ESCALA: Indicada	DATA: Novembro/2019	ÁREA TOTAL: 748,60m²	PRANCHA: 778-01 (Est. Concreto)
DESENHO: Rudimar N. Begrow			
PROPRIETÁRIO: MUNICÍPIO DE MARAVILHA CNPJ nº 82.821.190/0001-72	RESPONSÁVEL P/ PROJETO: Rudimar Norton Begrow CREA/SC nº 18993-3	RESPONSÁVEL P/ EXECUÇÃO:	