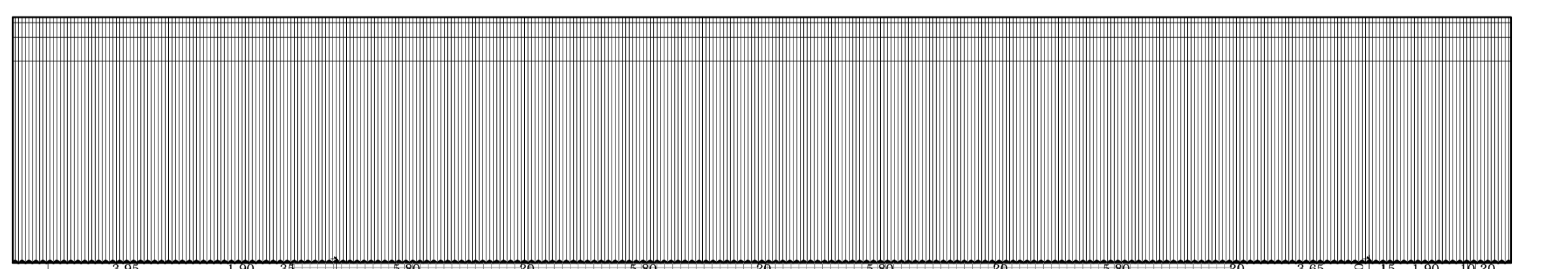
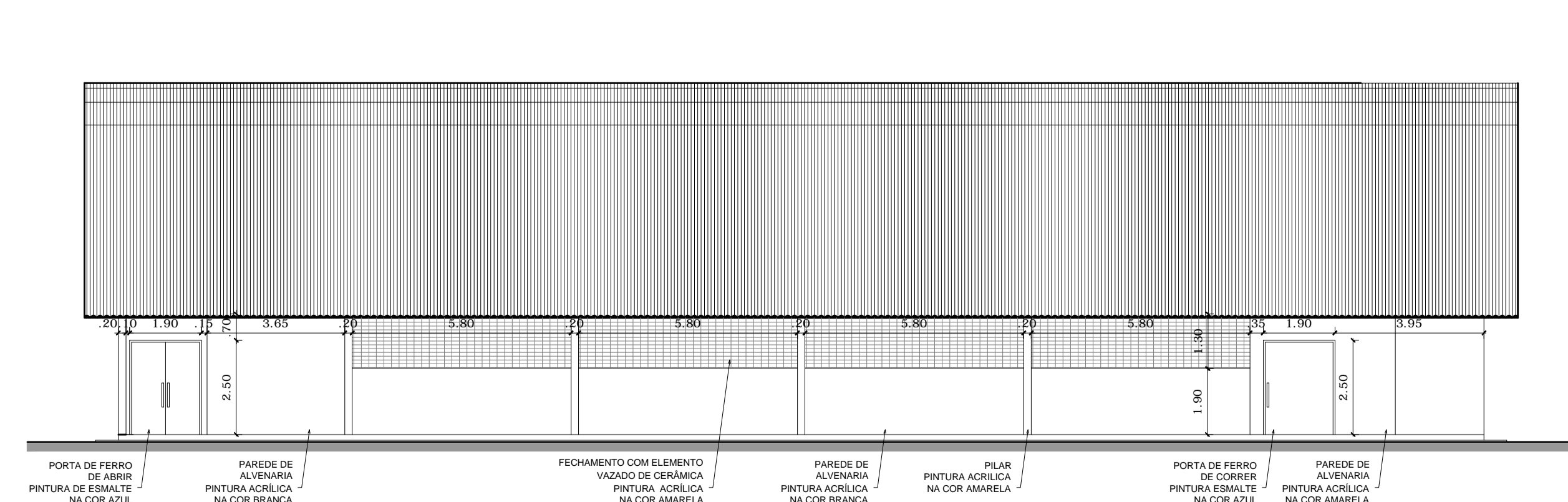


PLANTA BAIXA
ESCALA 1:125

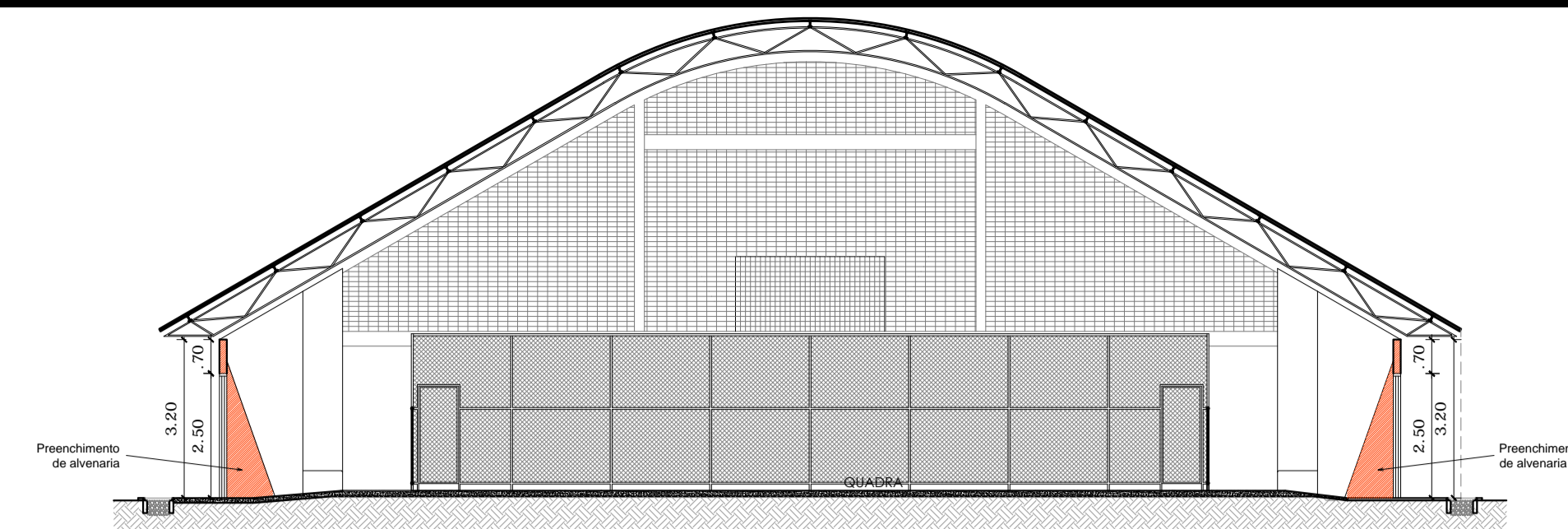
A construir
 Existente



FACHADA 01
ESCALA 1:125

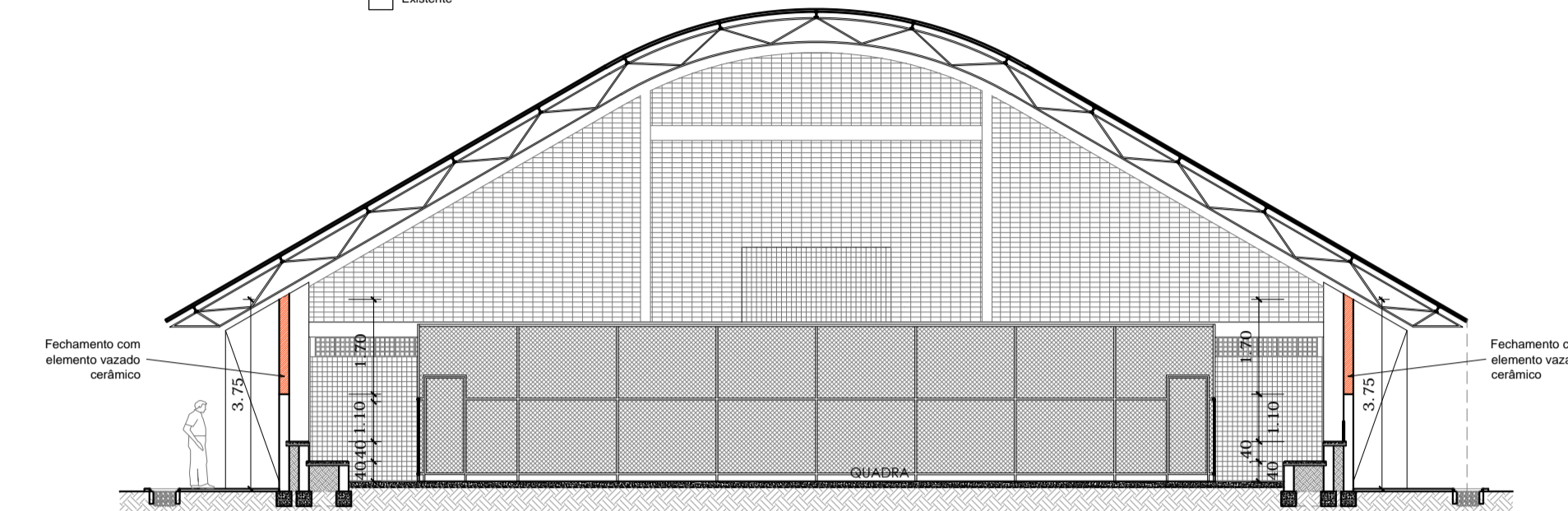


FACHADA 02
ESCALA 1:125



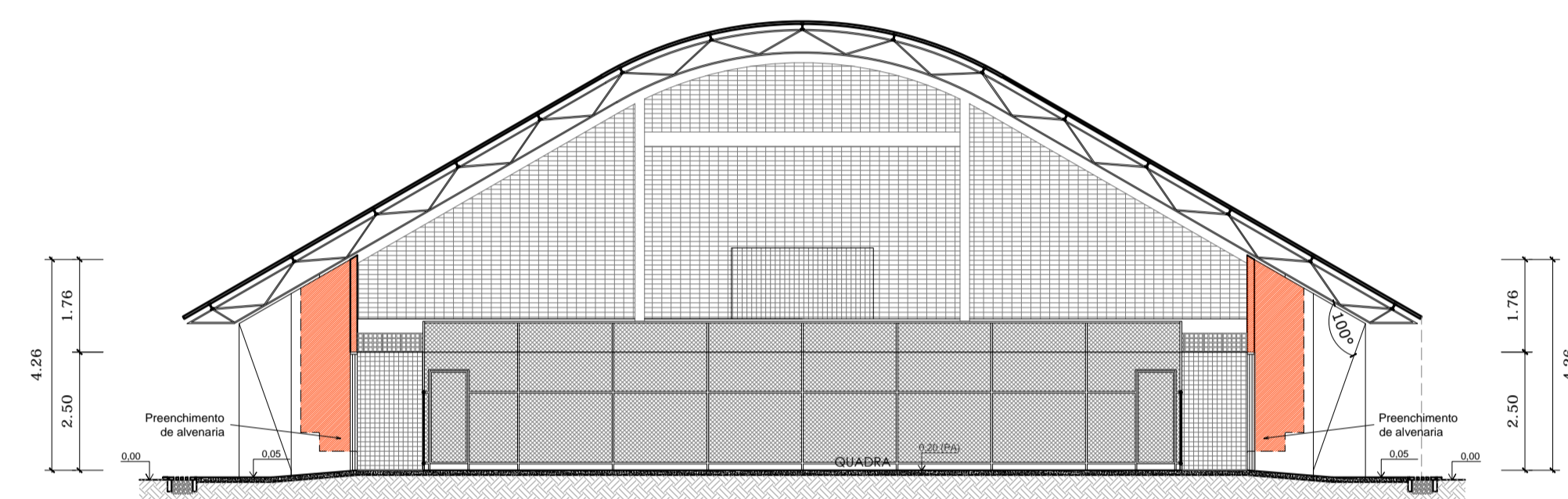
CORTE AA
ESCALA 1:125

A construir
 Existente



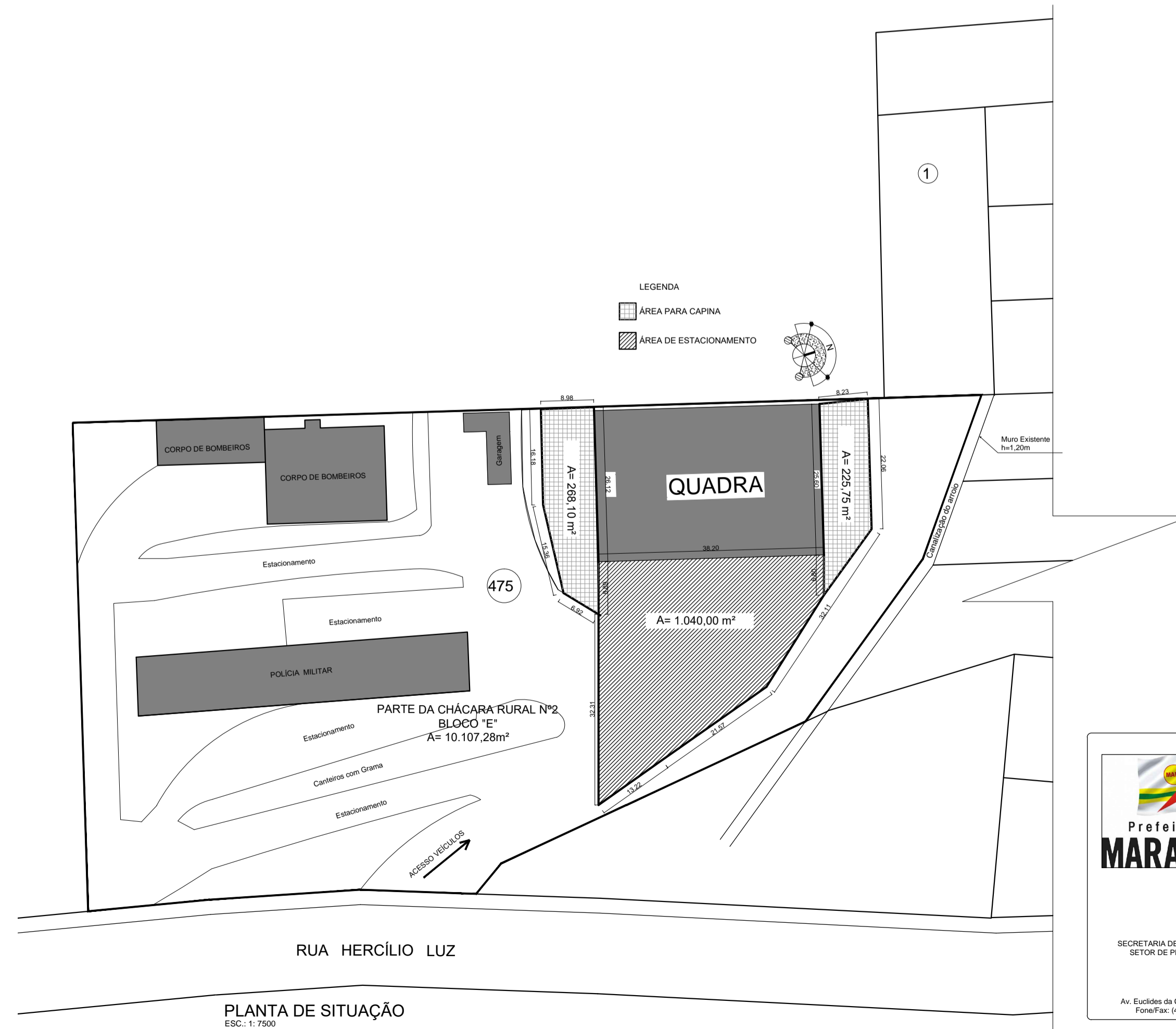
CORTE BB
ESCALA 1:125

A construir
 Existente




CORTE CC
ESCALA 1:125

A construir
 Existente



PLANTA DE SITUAÇÃO
ESC.: 1:7500


 SECRETARIA DE ADMINISTRAÇÃO
 SETOR DE PLANEJAMENTO

OBRA: REFORMA E COMPLEMENTAÇÃO DE OBRA
PROJETO: Quadra Coberta
CONTEÚDO: Planta baixa, cortes, fachadas e planta de situação
LOCAL: Rua Hercílio Luz

RESP. TÉCNICO: Arq. Camila Begrow CAU A74048-9
PROPRIETÁRIO: Município de Maravilha CNPJ 82.821.190/0001-72
DESENHO: Ana Vivian
ESCALA: INDICADA
DATA: dez-17
ARQUIVO: ARQ_QUADRA.dwg

FRANCA:
ARQ 01/01

Av. Euclides da Cunha, 85 - Centro
 Fone/Fax: (48) 3664-0544